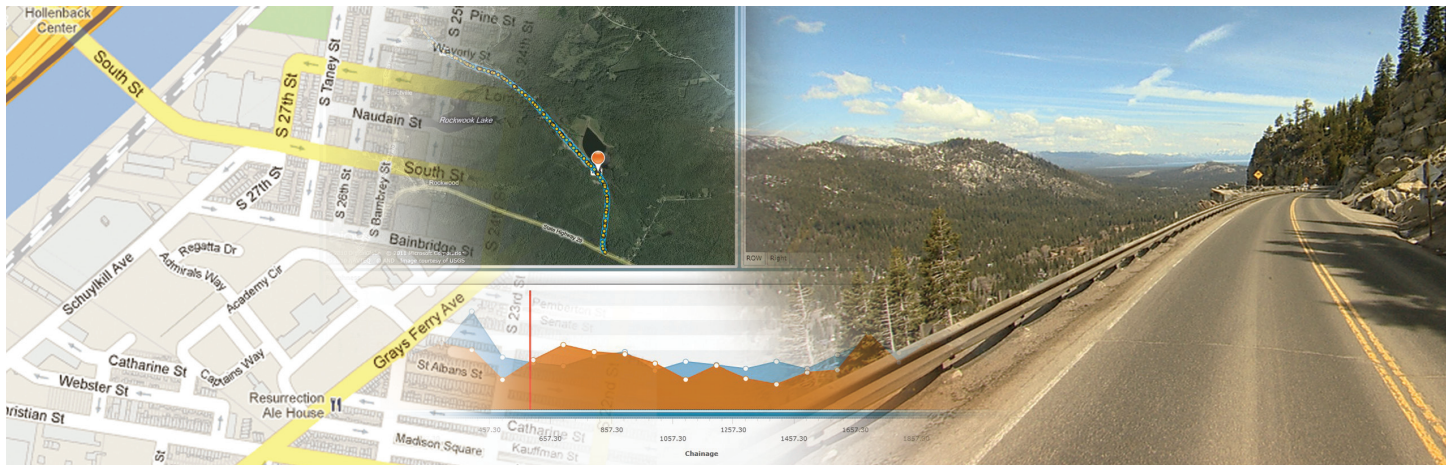


VISION

Vision is an all-in-one desktop data processing and analysis suite that can export to any PMS or AMS system. With Roadware Vision, the user can browse and interact with all collected data in a synchronized environment. The collected data is stored in a central project SQL database and can be matched to the clients road network using both LRS and GPS references.



See

Roadware Vision is a desktop application that offers synchronized viewing of pavement management data. Data collected from a road network only takes on meaning once it is processed. With Vision, all data processing, visualization, and reporting can be completed from one place.

Find

Collected data can be found using the Section Grid feature. Controls, cascading combo boxes, tree views, lists, and tool bar buttons for filtering, allow you to get anywhere within the application. Search is also possible from Vision's Webmaps feature; point and click to your location or text search.

Automate

With the batch processing tool create custom workflows and batch process days or weeks of collected data instantly. Batch process workflows can be saved and modified.

Customize

This modular application comes with an SDK that enables advanced users to create add-ons for Vision. Whether you need to have a bespoke rut measurement algorithm or a new crack detection system, Vision can handle your every need.

Linear Reference

Linear referencing systems may not always match up to GIS. The business logic behind linear reference systems has usually evolved over many years and often before GPS was ever used on the network. Vision has a toolset that brings your LRS to life and relates it to the collected data and GIS referencing.

Export

Select the data you need in the format you need it in. Export to a simple CSV, Microsoft Excel, ESRI SHP or Google KML file, or to a wide variety of Pavement Management Systems.

Map

Collected data can be overlaid on background maps. With an internet connection, overlay the data over Google Maps, Bing Maps, Open Streets Map as well as other mapping services.

Collaborate

Your organization will now be able to collaborate using Vision. A pavement engineer can analyze pavement condition and share it with asset management, materials or traffic teams.

Segment

Segment collected data to match any combination of your road network locations and conditions. Vision's integration into the data collection procedure ensures the information can be changed and updated as your network evolves.

Analyze

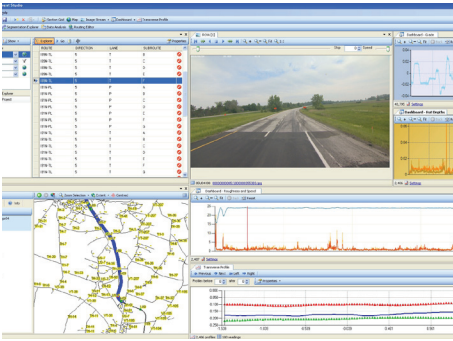
Monitor the network, evaluate key performance indicators, and make decisions based on collected data. Data can be analyzed in tables, charts, and dashboards.

Manage

Vision enables efficient management of network level data that will complement a road infrastructure management program seeking to improve pavement longevity and safety, while reducing the amount of money it takes to do so. Simple tools are provided to quickly identify areas in need of repair and summarize relevant information to make effective pavement maintenance decisions.

Report

Create customized reports to describe the collected data. Reports can be arranged and summarized to present the section and network information in a meaningful way. Templates can be created to ensure that routine reports are in a consistent format.

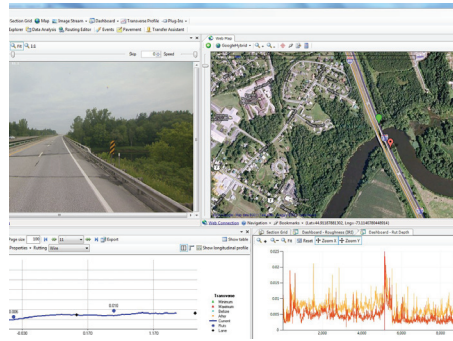


Features: Standard/Professional

- ▶ Map
- ▶ Video
- ▶ Pavement Imaging
- ▶ Charts
- ▶ Tables
- ▶ Transverse Profile View
- ▶ Event Creator
- ▶ Import

Additional Features in Vision Professional:

- ▶ Export
- ▶ Segmenting
- ▶ Distress Rating
- ▶ Event Editing
- ▶ Plug-In Manager
- ▶ Batch Processing
- ▶ Longitudinal Profile
- ▶ Roughness
- ▶ Rutting
- ▶ Routing Importer
- ▶ Data Control
- ▶ Report Generator



Specifications

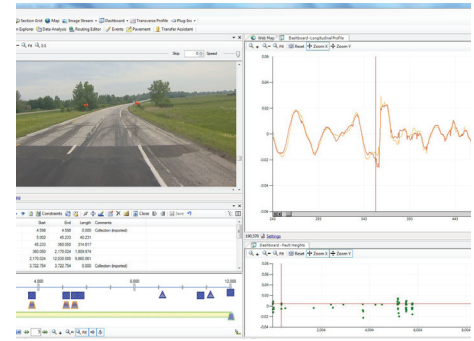
SERVER:

- ▶ Microsoft SQL Server 2005 or later (all editions are supported, including the license free Express)

CLIENT:

- ▶ Microsoft Windows XP or Windows 7
- ▶ Dual-core Processor minimum (quad-core processor recommended)
- ▶ 4 GB RAM minimum (6 GB recommended)
- ▶ Dual Monitor Configuration (extended desktop)
- ▶ 150 MB Available Hard Disk Space

All other software libraries developed by Fugro Roadware and third party components are installed by the application's setup. The right-of-way and pavement images can be stored and distributed on any network or local folder as long as the referred path is accessible to the application



Support & Maintenance

Fugro Roadware is committed to ensuring that you get the support you need in order to utilize Vision to its full potential. By acquiring Vision you are committing yourself and your organization to world class service.

Features of Our Support Program Include:

- ▶ Phone Support (Mon to Fri, 8:30 a.m. - 5:00 p.m. EST)
- ▶ Onsite Technical Support & Training
- ▶ Online Support

Premier Services Group (PSG) provides services to enhance the project-specific knowledge of key clients and to help them innovate at the top of their industries, including:

- ▶ Installation and Support Services
- ▶ Managing Plug-in Development
- ▶ Writing Productivity Scripts and High End Work Flows
- ▶ Optimizing Hardware
- ▶ Customized Training and Documentation

Fugro Roadware Inc.

2505 Meadowvale Boulevard
 Mississauga, ON, Canada L5N 5S2
 Toll Free: +1-800-828-ARAN
 Tel: +1-905-567-2870
 Email: info@fugroroadware.com
 www.fugroroadware.com